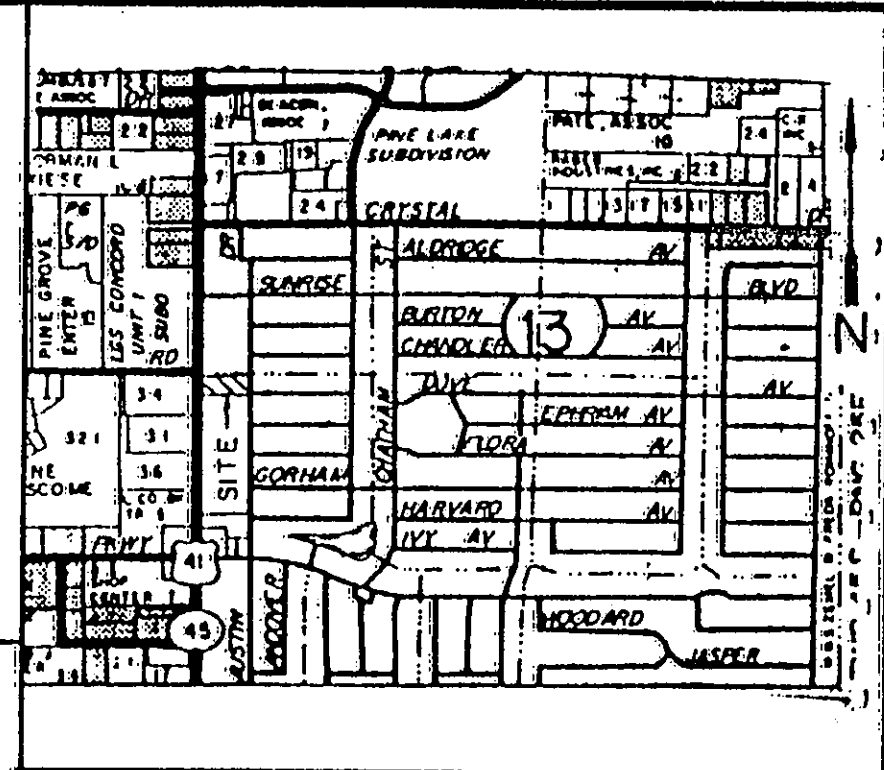
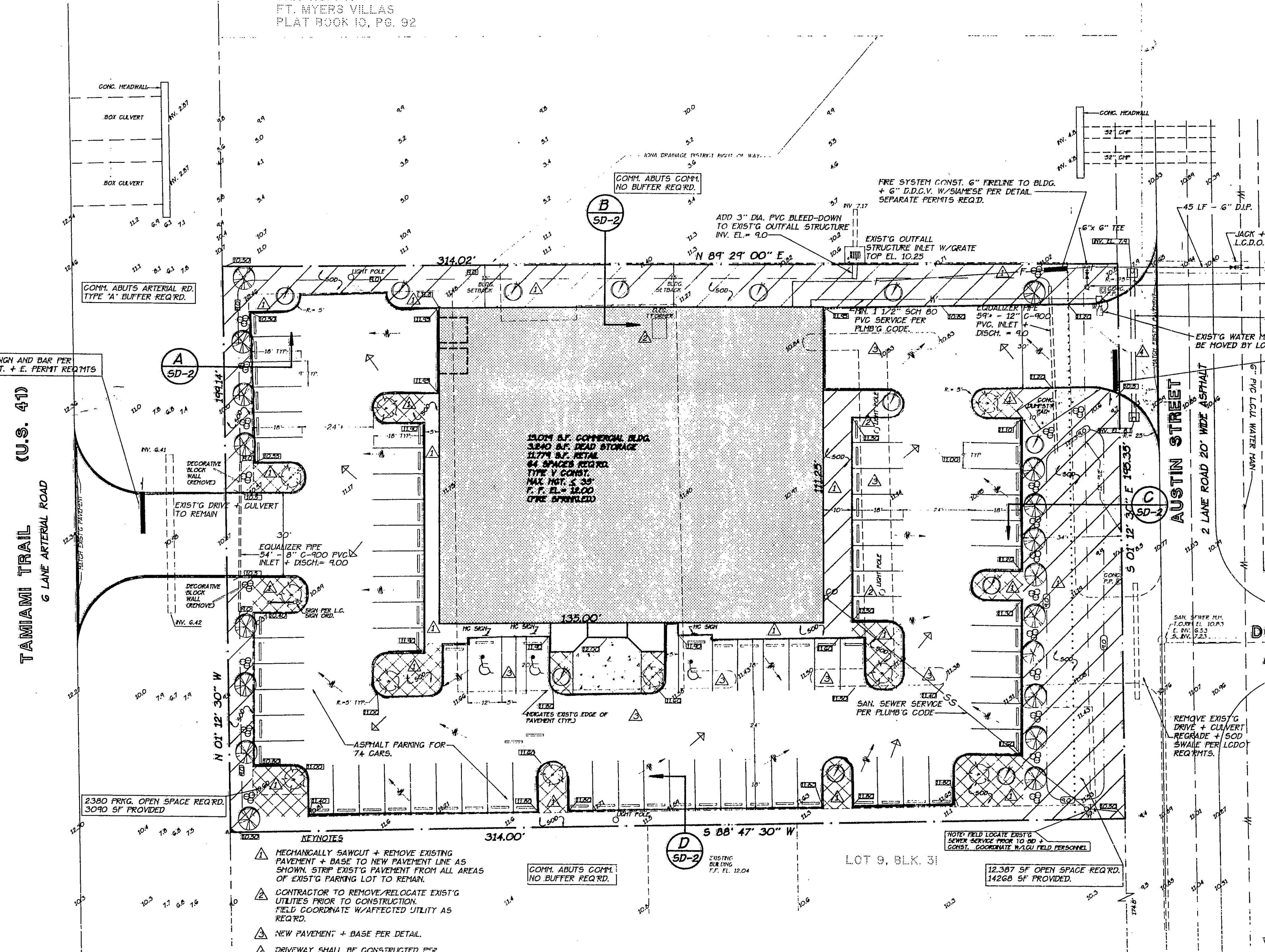


	AREA OF OPEN SPACE
	CANOPY TREE
	INTERIOR LANDSCAPING
	BUFFER TREE & SHRUBS
	EXISTING ELEVATION (INGVD)
	PROPOSED ELEVATION (INGVD)
	DIRECTION OF DRAINAGE FLOW
	EXISTING SURFACE FLOW
	AREA OF PARKING OPEN SPACE



UNIT NO. 1-A
FT. MYERS VILLAS
PLAT BOOK 10, PG. 92



STOP SIGN AND BAR PER L.C.D.O.T. + E. PERMIT REQ'TS

TAMIAMI TRAIL (U.S. 41)
6 LANE ARTERIAL ROAD

AUSTIN STREET
2 LANE ROAD 20' WIDE ASPHALT

DOVER AVE.

- MECHANICALLY SAWCUT + REMOVE EXISTING PAVEMENT + BASE TO NEW PAVEMENT LINE AS SHOWN. STRIP EXIST'G PAVEMENT FROM ALL AREAS OF EXIST'G PARKING LOT TO REMAIN.
- CONTRACTOR TO REMOVE/RELOCATE EXIST'G UTILITIES PRIOR TO CONSTRUCTION. FIELD COORDINATE W/AFFECTED UTILITY AS REQ'D.
- NEW PAVEMENT + BASE PER DETAIL.
- DRIVEWAY SHALL BE CONSTRUCTED PER L.C.D.O.T. SPECIFICATIONS. SEE DETAIL.

UTILITY PERMIT REQUIRED
Plan is not approved for location or placement of utilities. All work in county rights-of-way and easements must be permitted prior to commencing work.

Division of Development Review
Limited Review Development Order
APPROVED
By SPB Date 4/12/94
For Reassess
DD # 94-03-036.12L
Review Type 12
Zoning C-2 E.E.M.A. B Zone

North

SITE DEVELOPMENT PLAN

STRAP #13-45-24-06-00031.0010 1" = 20'

M.W. MORRIS & ASSOCIATES, INC.
Development Consultants... Civil Engineers... Planners

PROJECT: **SOUND ADVICE STEREO**
12810 SOUTH CLEVELAND AVE.
FT. MYERS, FL. 33907

DEVELOPER: **SCHERER CONSTRUCTION & ENGINEERING, INC.**
212 14th Circle North
St. Petersburg, Florida 33713 (813) 936-5222

DATE: _____
BY: _____
CHECKED BY: _____
APPROVED BY: _____

PLEASE NOTE:
Final Development Order does not confer approval for signage

EXIST'G HYDRANT FLOWS = 1355 GPM ON 3/16/94

JAMES OTTENSMANN, P.E.
FL. REG. #14743