

FINISH SCHEDULE

FLOORING

CT-1 - PRIMARY CARPET, SHAW
 STYLE NAME: LUTHER SQUARE
 STYLE NUMBER: 5976
 COLOR NAME: IVY SCULPTURE
 COLOR NUMBER: 76330
 CARPET BY OWNER - CONTRACTOR TO INSTALL

VC1 - ARNSTROM STANDARD EXCELON
 PATTERN: #1809 WERPAL TEXTURE
 COLOR: DESERT BEIGE

BASE

B1 - ARNSTROM COLOR-INTEGRATED
 4" RUBBER CODE WALL BASE
 COLOR: 54 BLACK/BROWN

PAINT

WALLS (ALL WALLS TO BE PAINTED P-1 UNLESS NOTED OTHERWISE)

P1 - PRIMARY COLOR
 SHERWIN WILLIAMS PROMAR LATEX EGGSHELL COLOR:
 SW740 GOLD STRAND

P2 - ACCENT COLOR
 SHERWIN WILLIAMS LATEX EGGSHELL
 COLOR: SW794 GONDOLA BLUE

DOOR FRAMES
 (ALL DOOR & WINDOW FRAMES TO BE PAINTED P-3 UNLESS NOTED OTHERWISE, EXCLUDING ALUM. STORFRONT)

P3 - PROMAR ALYD SEM-GLOSS
 COLOR: SW400 GOLD STRAND

P4 - PROMAR ALYD SEM-GLOSS
 COLOR: SW794 GONDOLA BLUE

CEILING

CT1 - ARNSTROM
 FINE FISSED #833 (WHITE)
 24"x24"x5/8" ANGLED REGULAR
 LAY-IN, PRELUDE 15/16" EXPOSED TEE GRID, 10'-2"
 HEIGHT THROUGHOUT UNLESS NOTED OTHERWISE

CT2 - ARNSTROM
 FINE FISSED #1834 (WHITE)
 24"x48"x5/8" ANGLED REGULAR
 LAY-IN, PRELUDE 15/16" EXPOSED TEE GRID, 10'
 HEIGHT THROUGHOUT

ALL INTERIOR DOORS
 BRICH SOLID CORE STAINED TO MATCH
 FORMICA AFRICAN LIMBA 701-43

ELASTIC LAMINATE
 (P-LAM TO COVER ALL EXPOSED WOOD SURFACES)

MILSWART
 P-1 COLOR: #193-80 PUTTY
 P-2 COLOR: #4923-80 GRAPHITE NEBULA
 P-3 COLOR: #199-80 WHITE BLACK
 P-4 COLOR: #1011-43 AFRICAN LIMBA

KEYED NOTES

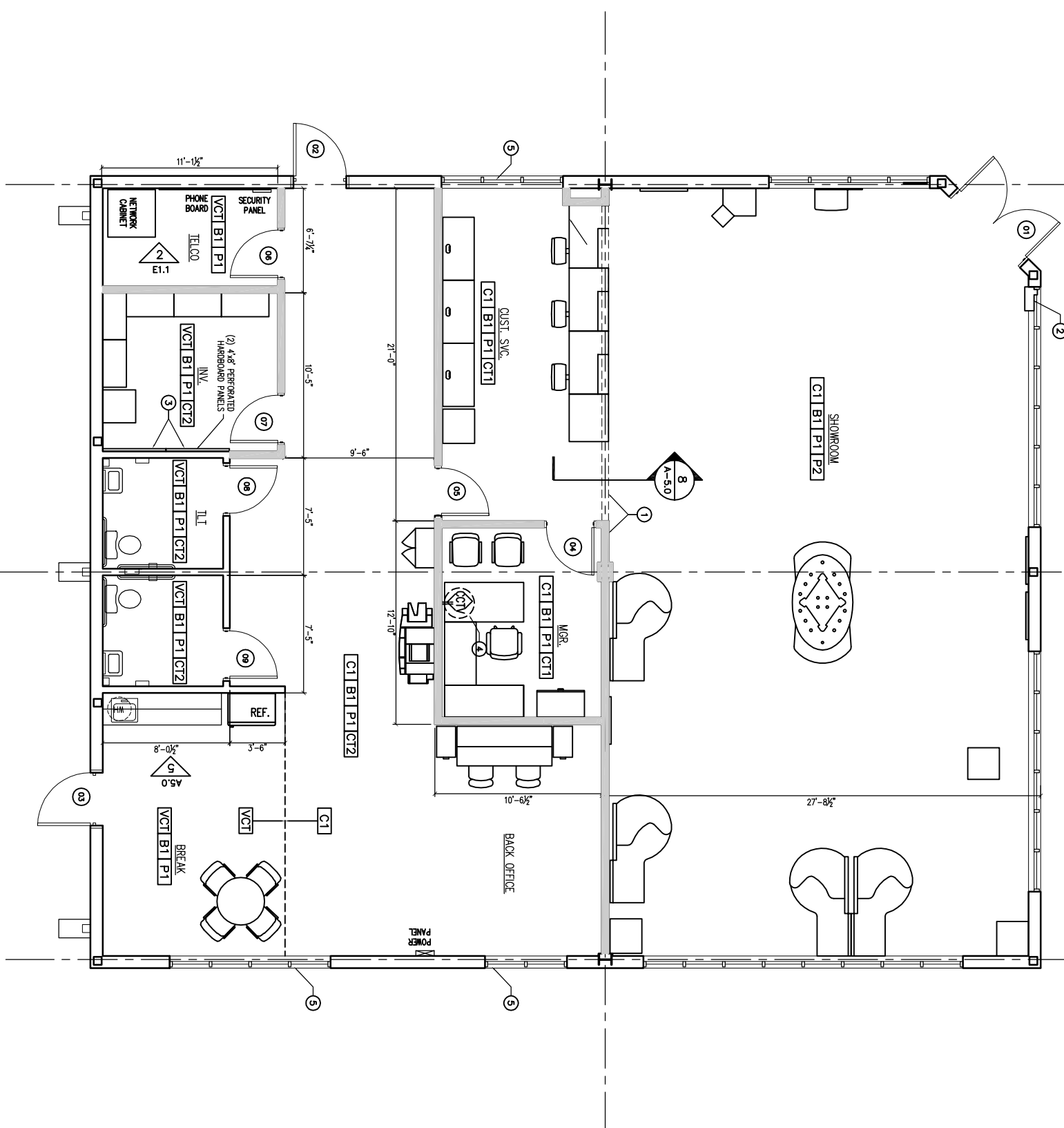
- 1 PAINT WALL & FLOOR DOWN (P2) GONDOLA BLUE. SEE FINISH SCHEDULE.
- 2 PAINTMENT DROP BOX. SEE DETAILS 1 & 2/450
- 3 G.C. TO INSTALL (5) 4'x8' PERFORATED HARDBOARD PANEL(S) VERTICAL OVER 1"x2" FRAME WITH (1) 1"x2" HORIZ. SUPPORT, CENTERED, MOUNT 4" AFF. TO W.L. SILL AS WEHED. G.C. TO SUPPLY 50 STRAPLET HARDWARE & ZINC PLATED (C2) STRAIGHT HARBORD NOK #1890L, PER 4'x8' PERFORATED HARBORD PANEL.
- 4 CCTV WALL-MOUNT BRACKET (SUPPLIED) AND INSTALLED BY SECURITY VENDOR) TO BE MOUNTED ON W.L. STUD, 48" AFF. G.C. TO PROVIDE BLOCKING.
- 5 BLINDS BY LEVOLOR - CORPLESS MARK I DISTINGUARD INSTALLED BY CONTRACTOR

CARPET NOTE

GENERAL CONTRACTOR TO FIELD MEASURE THE NEW CARPET AREAS FAX A COPY OF THE TAKEOFF DRAWING WITH SQUARE FOOTAGE TO **ARNOLD'S CARPET** WITH ARNOLD'S CARPET WALK TELEPHONE NUMBER IS (850) 225-3440. THE CARPET WILL BE ORDERED BY THE CONTRACTOR AND ARNOLD'S CARPET MAY WILL BILL ALTE. ALL CARPET SQUARES TO BE INSTALLED WITH 1/4" TURNS. CALL BARRY STANTON REGARDING INSTALLATION QUESTIONS OR VERIFYING MEASUREMENTS. THE CONTRACTOR IS RESPONSIBLE FOR ALL FIELD MEASUREMENTS AND INSTALLATION.

SYMBOLS LEGEND

- EXISTING TO REMAIN
- NEW METAL STUD WALL
- KEYED NOTES
- CEILING HT. ABOVE FINISH FLOOR
- DOOR NUMBER REFERENCE, SEE SCHED. ON SHEET A4.0
- FINISH SCHEDULE REFERENCE, SEE SCHED. THIS SHEET
- WINDOW NUMBER REFERENCE, SEE SCHED. ON SHEET A4.0



FLOOR PLAN

SCALE: 1/4" = 1'-0"

JOHNSON PETERSON ARCHITECTS, INC.
 2110 CENTERVILLE ROAD
 SUITE C
 TALLAHASSEE, FLORIDA 32308
 850 224.9700 VOICE
 850 224.9797 FAX
 jperchitects@jperchitects.com



CAPE CORAL
 FLORIDA

| DATE | PHASE | CHECK | DATE |
|------|-------|-------|------|
| | | | |
| | | | |
| | | | |

| # | DATE | COMMENTS |
|---|----------|-----------------------------|
| 1 | 02/09/04 | AS PER CODE REVIEW COMMENTS |
| | | |
| | | |

PROJECT NO.: 0403.003.01
 DATE: 04 MARCH 2004
CONSTRUCTION DOCUMENTS BUILD-OUT

FLOOR PLAN

SHEET
A1.0