

GENERAL NOTES

EXISTING FOUNDATION SHALL HAVE THE SAME FORCE AND EFFECT ON THE BUILDING AS IF IT WERE PERFECTLY ADAPTED TO THE CONTRACT DOCUMENTS ON FILE AND PLANNED THEREIN. CONTRACTOR SHALL VERIFY THE FOUNDATION AS SHOWN ON PLANS AND REPORT ANY DISCREPANCIES TO THE ARCHITECT AS SOON AS PRACTICABLE.

ALL WORK SHALL CONFORM TO THE FOLLOWING CODES AND ORDINANCES:

- FLORIDA FIRE PREVENTION CODE, 2001 EDITION
- FLORIDA BUILDING CODE, 2001 EDITION
- FLORIDA PLUMBING, MECHANICAL & ELECTRICAL CODE, 2001 EDITION
- NATIONAL ELECTRICAL CODE, 1993 EDITION

LOCAL CODES AND ORDINANCES ARE APPLICABLE, FLOOD DAMAGE PREVENTION ORDINANCES.

SUPPLEMENT AND CONTROL

THE ARCHITECT HAS NOT BEEN RETAINED, NOR IS RESPONSIBLE FOR THE DESIGN OR CONSTRUCTION OF ANY SPECIALTY TRADES OR EQUIPMENT. THE ARCHITECT'S RESPONSIBILITY IS LIMITED TO THE DESIGN AND CONSTRUCTION OF THE BUILDING AS SHOWN ON THESE PLANS. THE ARCHITECT DOES NOT WARRANT THE ACCURACY OF ANY INFORMATION PROVIDED BY OTHERS. THE ARCHITECT SHALL NOT BE RESPONSIBLE FOR THE DESIGN OR CONSTRUCTION OF ANY SPECIALTY TRADES OR EQUIPMENT.

GENERAL CONTRACTOR'S OBLIGATIONS

THE GENERAL CONTRACTOR SHALL BE RESPONSIBLE FOR THE DESIGN AND CONSTRUCTION OF THE BUILDING AS SHOWN ON THESE PLANS. THE ARCHITECT DOES NOT WARRANT THE ACCURACY OF ANY INFORMATION PROVIDED BY OTHERS. THE ARCHITECT SHALL NOT BE RESPONSIBLE FOR THE DESIGN OR CONSTRUCTION OF ANY SPECIALTY TRADES OR EQUIPMENT.

TEMPORARY FACILITIES

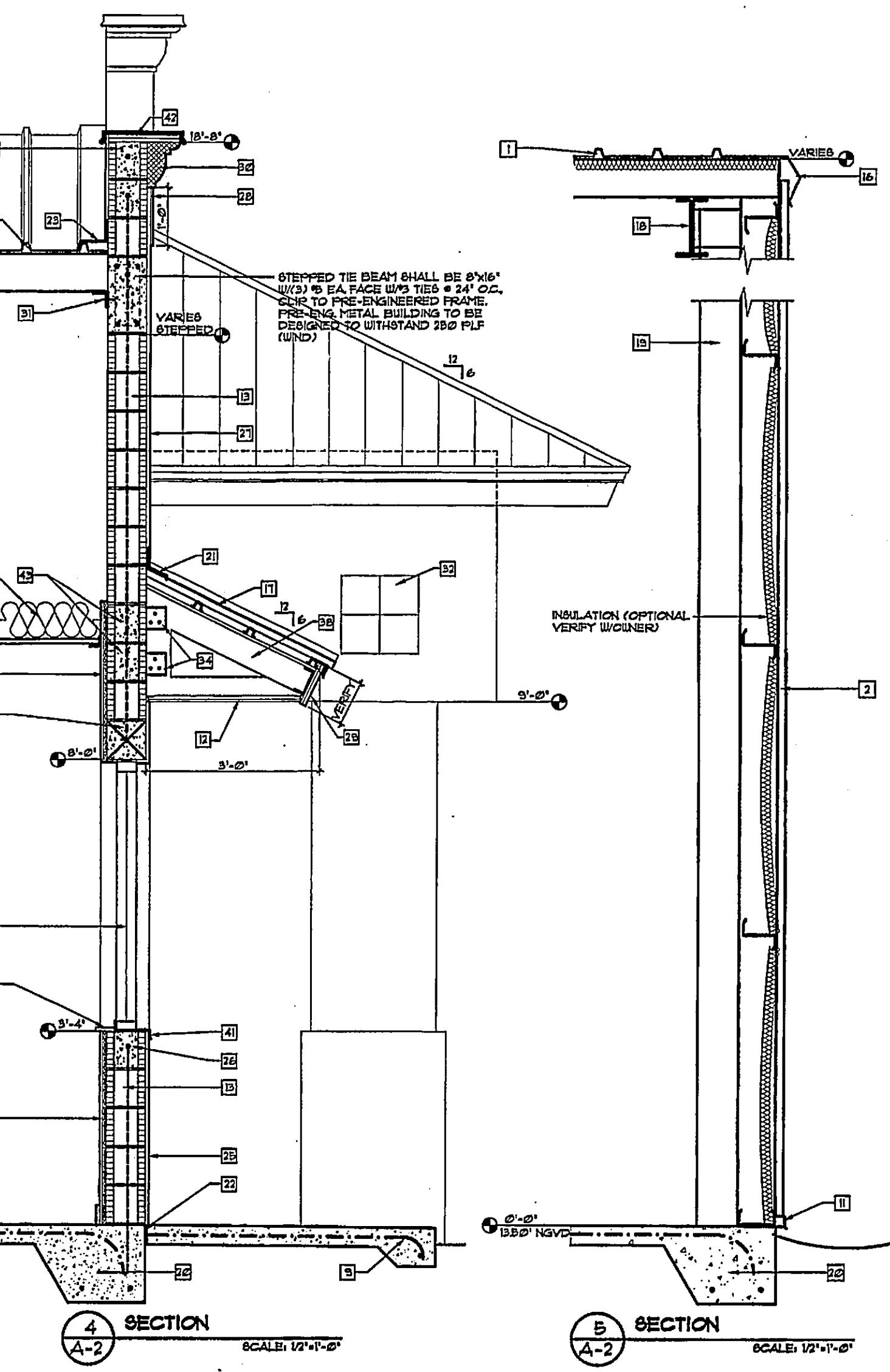
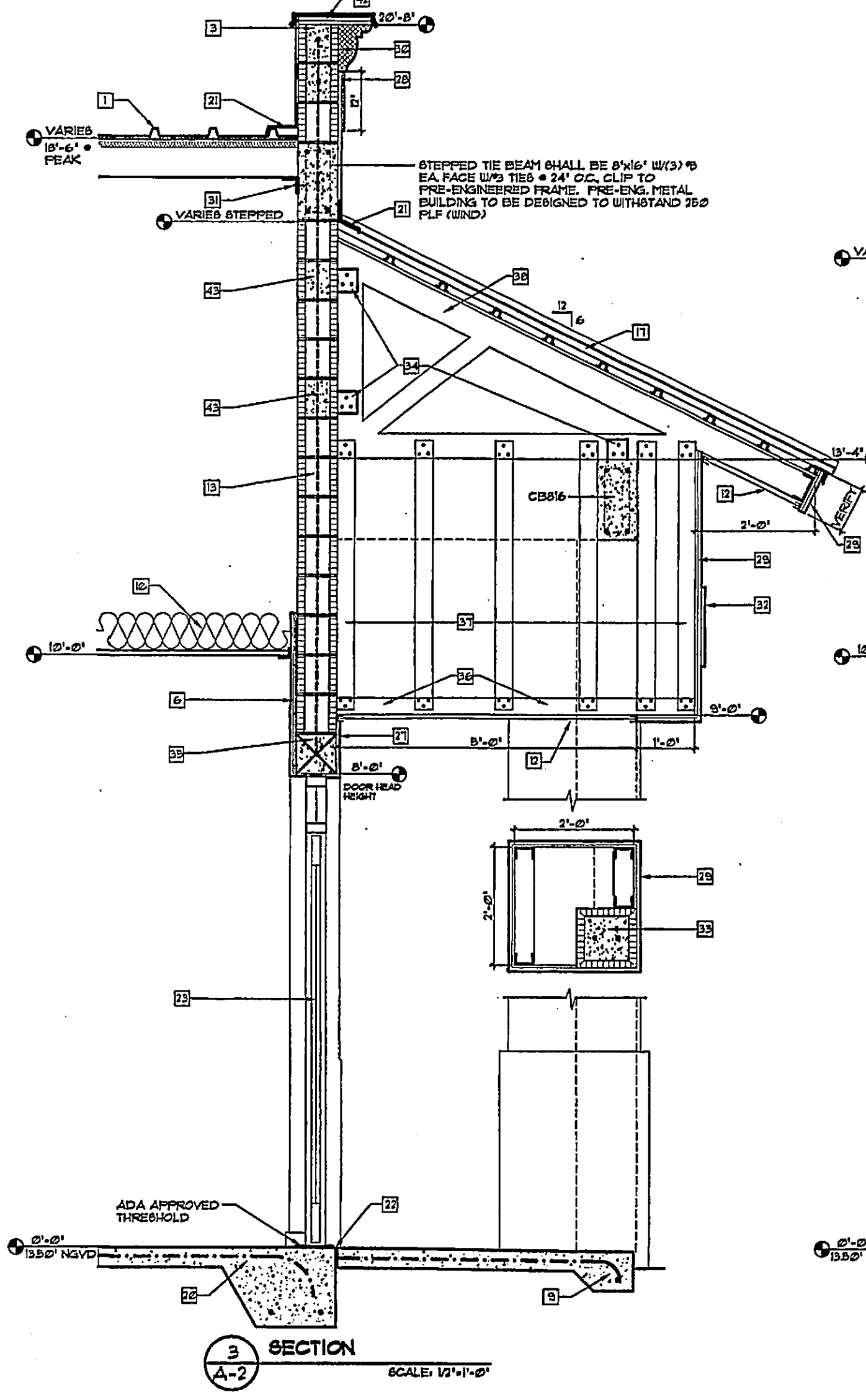
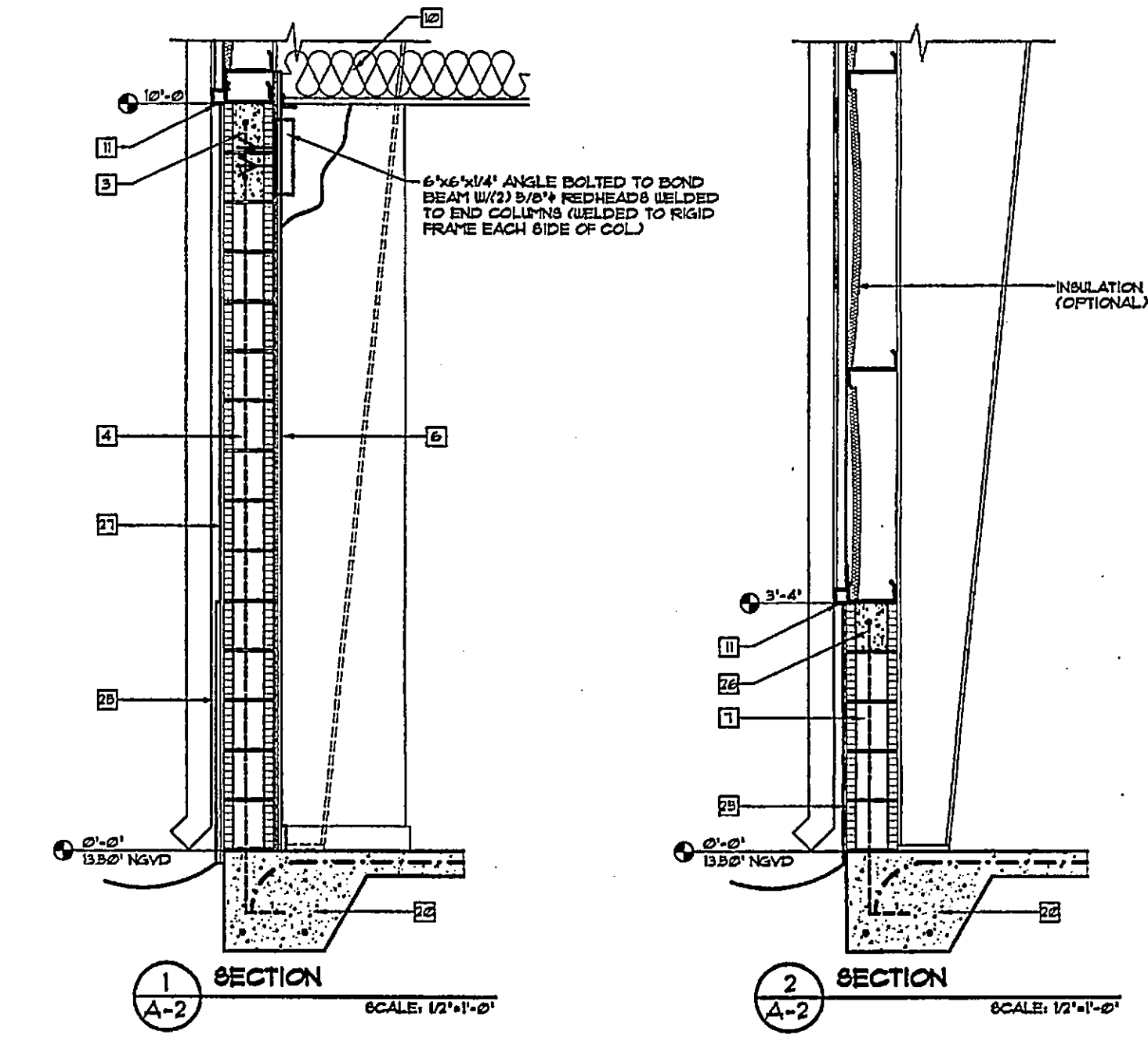
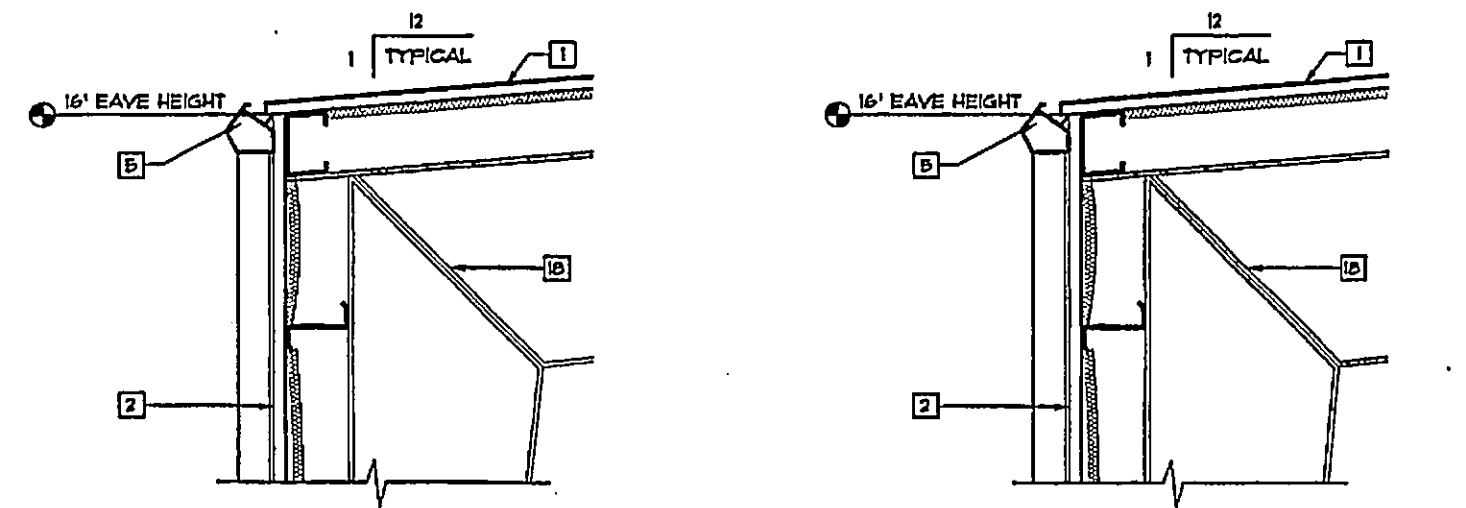
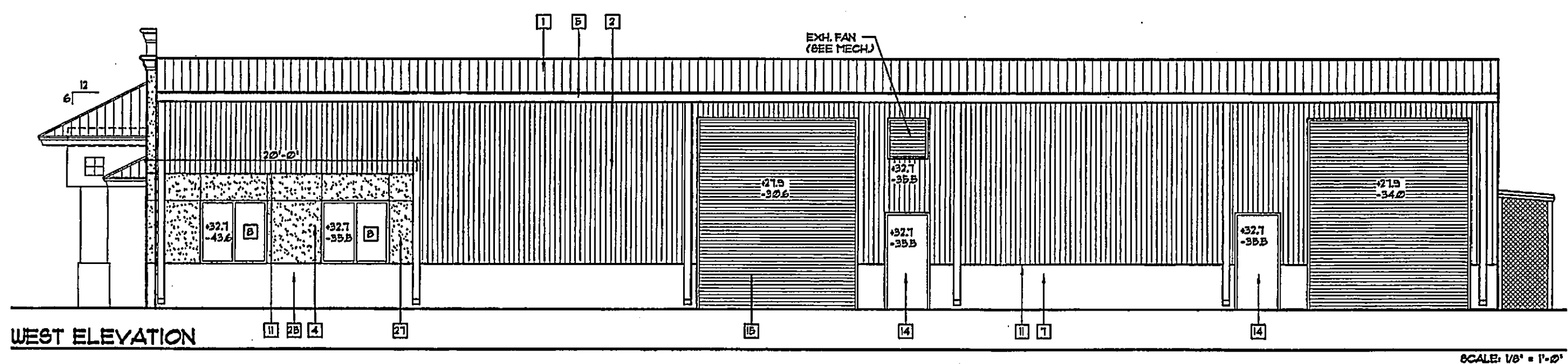
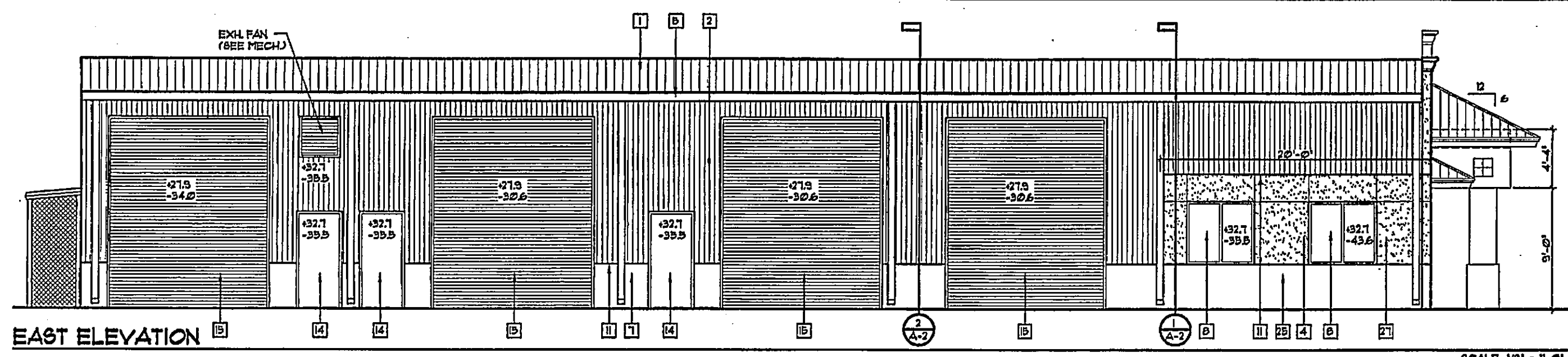
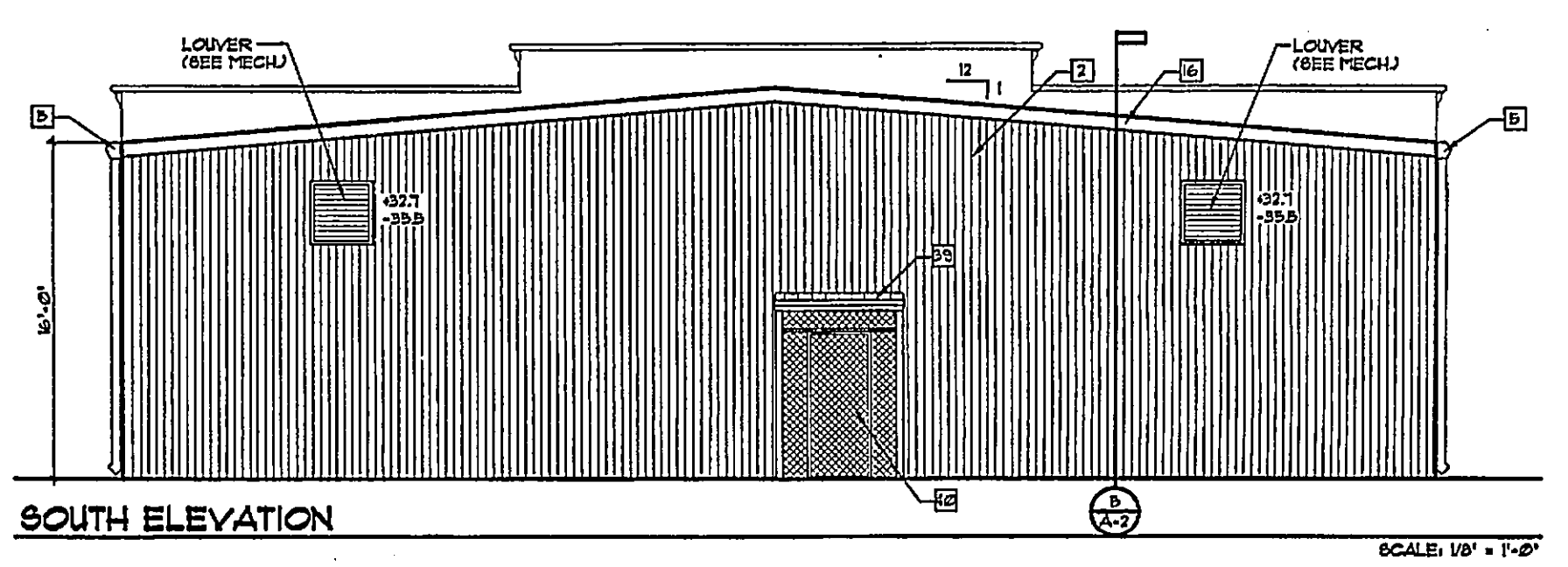
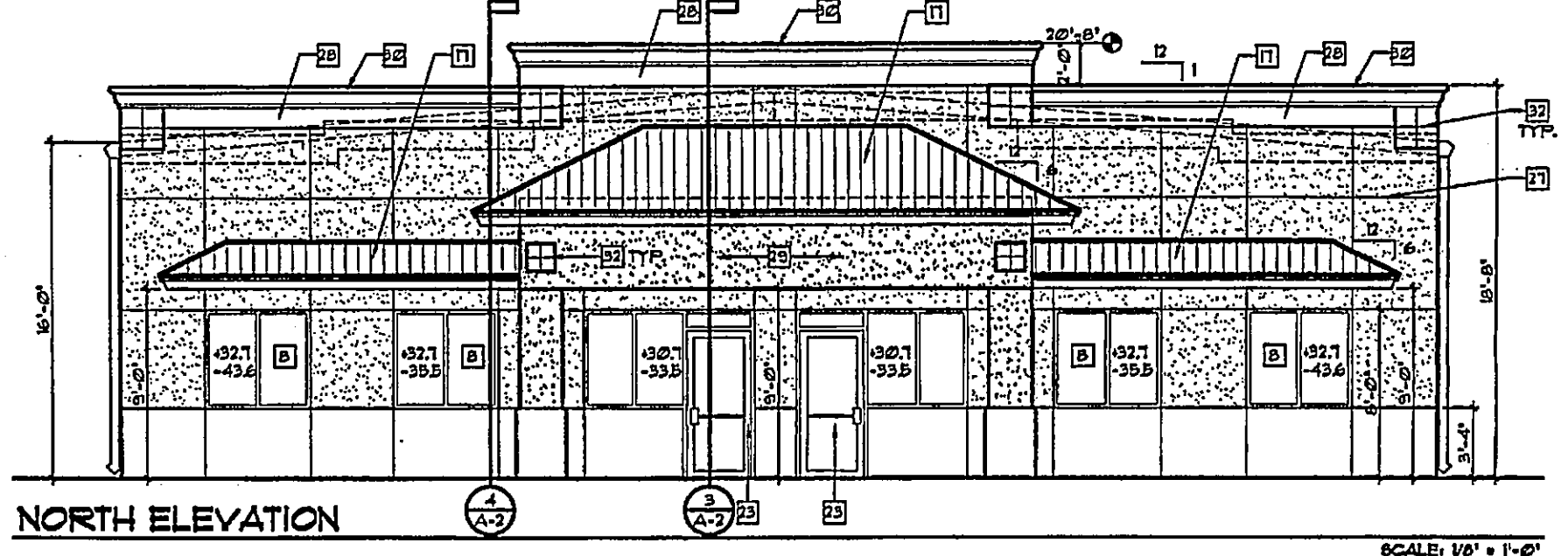
REFER TO THE GENERAL CONDITIONS OF THE CONTRACT OF CONSTRUCTION FOR DETAILED REQUIREMENTS TO PROVIDE THE FOLLOWING SERVICES AS REQUIRED TO PERFORM THE WORK:

- TEMPORARY UTILITY SERVICES
- TEMPORARY CONSTRUCTION FACILITIES
- TEMPORARY LIGHTING, TEMPORARY ROADS, TEMPORARY ELEVATOR HOISTS, AND FENCE CONSTRUCTION FACILITIES
- TEMPORARY SUPPORT FACILITIES

GENERAL

THE ARCHITECT'S DESIGN IS BASED ON THE ASSUMPTIONS AND CONDITIONS SET FORTH IN THESE PLANS. THE ARCHITECT SHALL NOT BE RESPONSIBLE FOR THE DESIGN OR CONSTRUCTION OF ANY SPECIALTY TRADES OR EQUIPMENT.

- ELEVATION KEY NOTES**
- 1) TYPICAL METAL BUILDING ROOF CONSTRUCTION
 - 2) TYPICAL METAL WALL CONSTRUCTION
 - 3) 2" CORRUGATED GIBBON-OUT BLOCK BOND BRAM W/ 2000 PSI CONCRETE & 1" O.C. IN FULLY GROUTED CELLS
 - 4) 12" O.C. HIGH MASONRY WALL CONSTRUCTION
 - 5) 8" CONCRETE CMU CONC. BLOCK WALL W/ 1/2" VERTICAL REINFORCEMENT # 3 AT 24" O.C. IN FULLY GROUTED CELLS AND EACH SIDE OF ALL OPENINGS AND CORNER LOCATIONS. HORIZONTAL JOINT REINFORCEMENT AT EVERY SECOND COURSE. REFER TO MASONRY SPECIFICATIONS ON SHEET A-3.
 - 6) CONTINUOUS 24 GAUGE - GUNNER SELECT COLOR GUTTER WITH DOWN SPIGOTS AND CONCRETE BRACKETS LOCATED ON ELEVATIONS. REFER TO METAL BUILDING SHOP DRAWINGS FOR ADDITIONAL INFORMATION.
 - 7) 1/2" GYP. BOARD ON 1/2" FURRING STRIPS # 16' O.C. W/ R-4 BATT INSULATION.
 - 8) 2" X 4" HIGH MASONRY WALL CONSTRUCTION
 - 9) 8" CONCRETE CMU CONC. BLOCK WALL W/ 1/2" VERTICAL REINFORCEMENT # 3 AT 24" O.C. IN FULLY GROUTED CELLS AND EACH SIDE OF ALL OPENINGS AND CORNER LOCATIONS. HORIZONTAL JOINT REINFORCEMENT AT EVERY SECOND COURSE. REFER TO MASONRY SPECIFICATIONS ON SHEET A-3.
 - 10) INSTALL 1/2" X 1/4" X 1/4" TYPED WINDBORNE DEBRIS IMPACT RESISTANT TINTED GLASS IN ALUMINUM FRAME CENTERED FOR 1/2" MIN. UNDRIFTEED REFER TO INSTALLATION DETAIL BY SUPPLIER. CALLK WATERIGHT BEFORE STUCCO INSTALLATION. CALLK WATERIGHT AFTER STUCCO INSTALLATION. PROVIDE PRECAST CONG. LINTEL OVER OPENINGS. ATTACH FRAME TO MASONRY W/ 3/16" DIA. 3-1/4" TAPSONS W/ 1/2" STUDS @ 4" O.C. & ENDS @ 1' O.C. IN FIELD. UNLESS OTHERWISE SPECIFIED BY ALUMINUM MANUFACTURER, PROVIDE ALUMINUM SUBSILL.
 - 11) 6" THICKENED EDGE W/ (U) # 3 CONT.
 - 12) DROP CEILING CONSTRUCTION
 - 13) GUNNER SELECT 2 1/2" LAY-IN CEILING TILE IN GUNNER SELECT COLOR METAL GRID SYSTEM. R-18 BATT INSULATION.
 - 14) CONT. METAL FLASHING - REFER TO SHOP DRAWINGS.
 - 15) TYPICAL ROOF CONSTRUCTION
 - 16) 24 GAUGE - GUNNER SELECT COLOR - VENTED RUBBER CONCEALED CLIP-FASTENERS, STEEL GOFFIT PANELS ON METAL STUD FRAMING.
 - 17) 12" O.C. 2" X 4" HIGH MASONRY WALL CONSTRUCTION
 - 18) 8" CONCRETE CMU CONC. BLOCK WALL W/ 1/2" VERTICAL REINFORCEMENT # 3 AT 24" O.C. IN FULLY GROUTED CELLS AND EACH SIDE OF ALL OPENINGS AND CORNER LOCATIONS. HORIZONTAL JOINT REINFORCEMENT AT EVERY SECOND COURSE. REFER TO MASONRY SPECIFICATIONS ON SHEET A-3.
 - 19) INSTALL 3/16" HOLLOW METAL DOOR AND FRAME WITH STANDARD HARDWARE, CLOSER, ALUMINUM THRESHOLD & WEATHERSTRIP. CALLK WATERIGHT BEFORE STUCCO INSTALLATION & CALLK AGAIN WATERIGHT AFTER STUCCO INSTALLATION. CERTIFIED FOR 150 MPH WIND LOAD. PROVIDE PRECAST LINTEL IN MASONRY WALL OVER OPENING.
 - 20) INSTALL 12" X 14" CHAIN HOIST OVERHEAD STEEL COILING DOOR WITH ASSOCIATED HARDWARE AND METAL TRACK. CERTIFIED FOR 150 MPH WIND LOAD - REFER TO INSTALLATION DETAIL BY SUPPLIER.
 - 21) CONTINUOUS METAL EAVE FLASHING. REFER TO METAL BUILDING SHOP DRAWINGS.
 - 22) METAL ROOF CONSTRUCTION
 - 23) 24 GAUGE - GUNNER SELECT COLOR GALVALUMED KYNAR 500 STEEL ROOF PANELS ATTACHED TO 1 1/2" METAL HAT SECTION # 12" O.C. ON PRE-ENGINEERED METAL TRUSSES. DESIGN ROOF FOR 150 MPH UNDRIFTEED.
 - 24) RIGID STEEL COLUMN - REFER TO SHOP DRAWINGS.
 - 25) RIGID STEEL FRAME - REFER TO SHOP DRAWINGS.
 - 26) REFER TO FOUNDATION PLAN AT SHEET A-3 FOR DETAILS.
 - 27) CONT. METAL FLASHING & COUNTERFLASHING - REFER TO SHOP DRAWINGS.
 - 28) 1/2" FIBER EXPANSION MATERIAL.
 - 29) INSTALL 3/16" TYPED WINDBORNE DEBRIS IMPACT RESISTANT TINTED GLASS IN ALUMINUM DOOR AND FRAME WITH 1/2" MIN. UNDRIFTEED. AUTO CLOSER, ALUMINUM THRESHOLD & WEATHERSTRIP. STANDARD HARDWARE. CERTIFIED FOR 150 MPH WIND SPEED - REFER TO INSTALLATION DETAIL BY SUPPLIER. CALLK WATERIGHT BEFORE STUCCO INSTALLATION. ATTACH FRAME TO MASONRY W/ 3/16" DIA. 3-1/4" TAPSONS W/ 1/2" STUDS @ 4" O.C. & ENDS @ 1' O.C. IN FIELD. UNLESS OTHERWISE NOTED BY STONEFRONT MANUFACTURING ENGINEER, PROVIDE PRECAST CONG. LINTEL OVER OPENINGS. PROVIDE ALUMINUM SUBSILL.
 - 30) MARBLE SILL
 - 31) SMOOTH STUCCO WAINSCOT.
 - 32) TYPICAL BOND BEAM CONSTRUCTION
 - 33) 8" CMU BOND BLOCK W/ 2000 PSI CONCRETE AND (U) # 3 CONTINUOUS.
 - 34) 1/2" MINIMUM PAINTED, LIGHT SHOP TROUCEL STUCCO VENEER.
 - 35) DECORATIVE SMOOTH STUCCO BAND.
 - 36) 3/4" STUCCO ON PAPER BACKED SELF-FERRING METAL LATH ON 1/2" EXTERIOR GYP. BOARDING - ATTACH TO STUCCO W/ 1/2" TEX. SCREWS @ 4" O.C. # PANEL EDGES @ 6" O.C. # INTERMEDIATE STUDS.
 - 37) DECORATIVE STYROFOAM HOLDING COVERED WITH STUCCO
 - 38) CONT. 3/4" X 1/4" STEEL ANGLES ATTACHED TO FURLINS W/ 1/2" THRU BOLT & TO MASONRY W/ 3/16" X 1/2" WEDGE BOLTS @ 24" O.C. @ (U) DIRECTLY UNDER PURLIN.
 - 39) STUCCO MEDALLIONS.
 - 40) 1/2" O.C. CHU W/ 3/8" V. CONT. IN FULLY GROUTED CELLS.
 - 41) 4" X 4" ANGLE W/ 3/8" X 1/4" TAPSONS INTO MASONRY & 3/8" TEX. SCREWS INTO TRUSS (1/2" OF 3).
 - 42) PRECAST CONG. LINTEL W/ 3" W. CONC. FILL.
 - 43) 4" X 4" METAL STUDS @ 24" O.C. ATTACHED TO EACH TRUSS W/ 3/8" TEX. SCREWS.
 - 44) 4" X 4" METAL STUDS @ 16" O.C. ATTACHED TO EACH TRUSS W/ 3/8" TEX. SCREWS.
 - 45) PRE-ENGINEERED ROOF TRUSSES @ 24" O.C.
 - 46) PREFABRICATED ALUMINUM ROOF COVERINGS OVER COMPRESSOR - (OVERY REQUIRED HEIGHT). PROVIDE ON 3" SQUARE ALUMINUM FRAMING BLOCK WITH 1/4" VERTICAL SUPPORTS WITH 1/2" DIAMETER EXPANSION ANCHORS INTO CONCRETE.
 - 47) GALV. STEEL CHAIN LINK FENCE WITH PLASTIC BLAT INSERTS - PROVIDE WITH 3'-0" WIDE SWING GATE AND GALV. STEEL POSTS, TOP RAIL AND ACCESSORIES AS REQUIRED.
 - 48) ALUMINUM SUB-SILL.
 - 49) METAL CAP FLASHING ON (U) LAYERS OF F.T. PLUCCO ADHORED TO MASONRY W/ POWER DRIVEN FASTENERS @ 16" O.C. CONG. FILLED CELLS.



PROJ. NO.	
DRAWN	B.D.J.
DATE	2/25/03
CHECKED	J.P.T.
REVISIONS	
DATE	BY

A NEW BUILDING FOR
 HITCH & TRAILERS
 OF FORT MYERS, INC.
 LEE COUNTY, FLORIDA

JASON P. TRAMONTE
 ARCHITECT
 4524 S.E. 16TH PLACE CAFE CORAL, FLORIDA 33904
 (239) 549-0997

JASON P. TRAMONTE
 ARCHITECT
 4524 S.E. 16TH PLACE CAFE CORAL, FLORIDA 33904
 (239) 549-0997

THIS PROJECT HAS BEEN DESIGNED IN ACCORDANCE WITH THE LEE COUNTY LAND DEVELOPMENT CODE, CHAPTER 6, ARTICLE IV SECTION 6-444.
 THIS PROJECT HAS BEEN DESIGNED IN ACCORDANCE WITH THE FLORIDA BUILDING CODE 2001, SECTION 1604 FOR 150 MPH WIND SPEED AND THE FLORIDA FIRE PREVENTION CODE 2001.