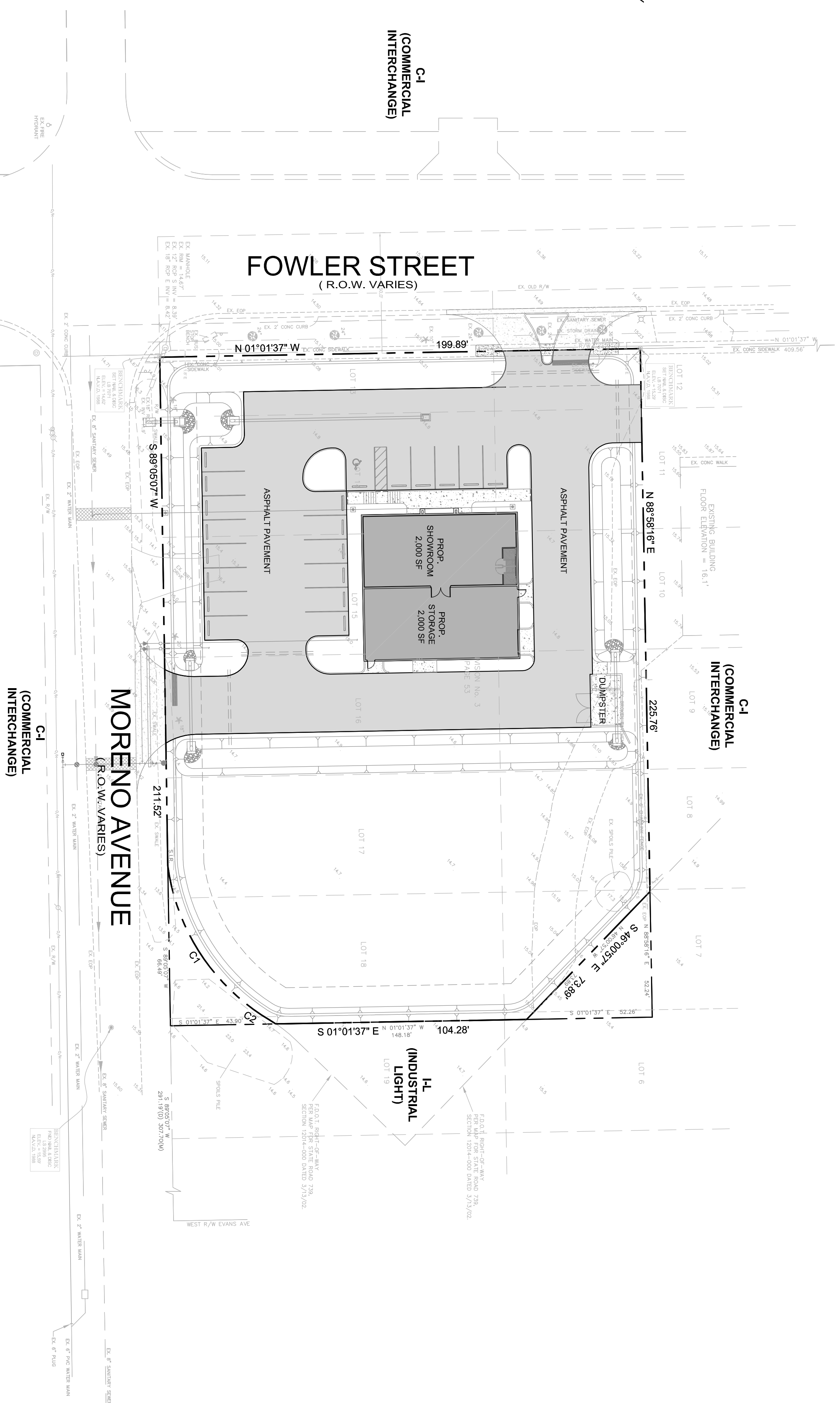


NOTE:  
THESE PLANS MAY HAVE BEEN REDUCED OR INCREASED IN  
SIZE BY REPRODUCTIONS). THIS MUST BE CONSIDERED WHEN  
OBTAINING SCALED DATA.

**SITE CONSTRUCTION PLANS  
FOR  
FORTILE STONES  
SECTION 25, TOWNSHIP 44S, RANGE 24E  
(BLOCK 2, LOTS 13 - 18)  
FORT MYERS, LEE COUNTY, FLORIDA**

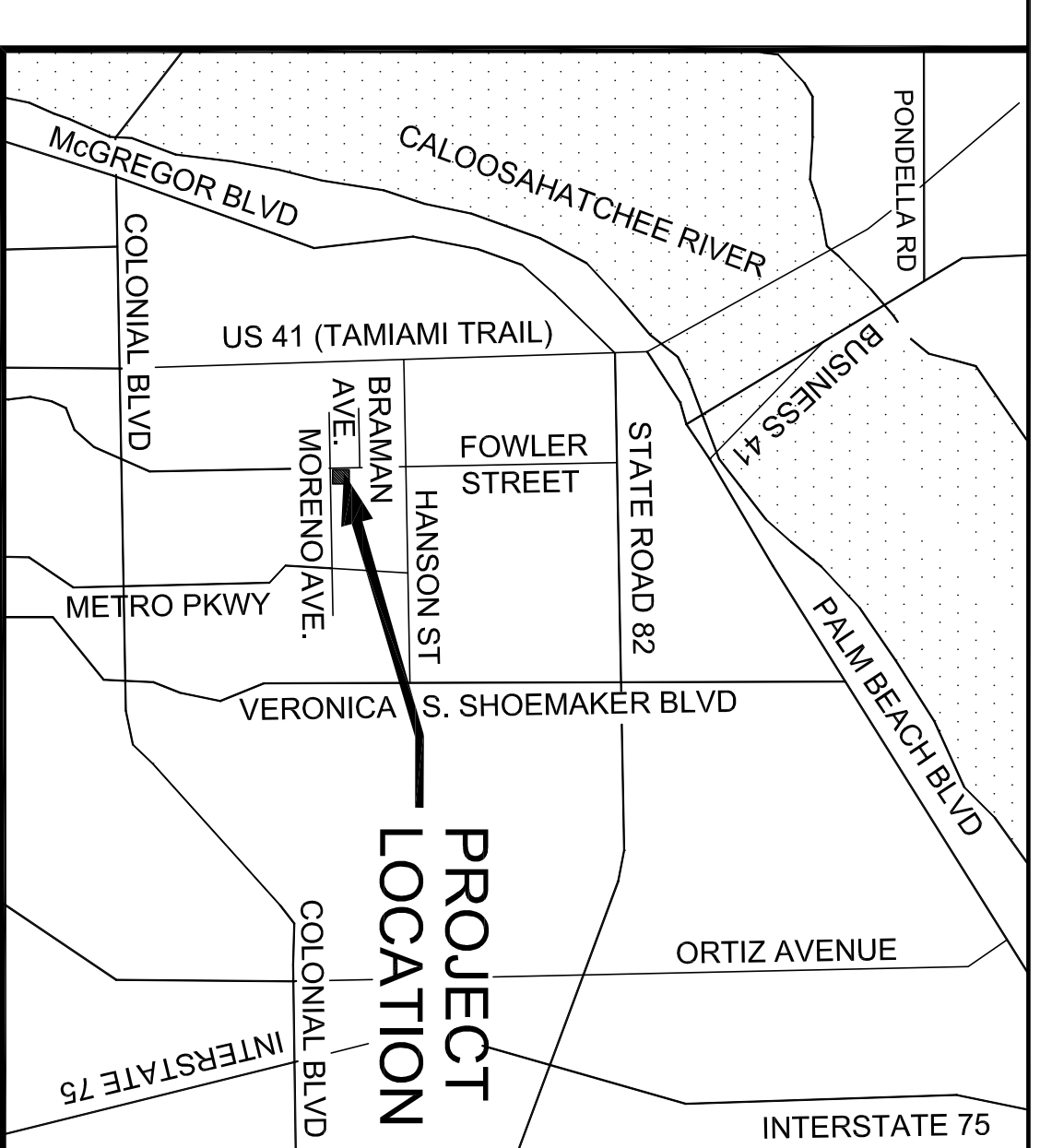


- UTILITY COMPANIES:**
- ELECTRIC:**  
FLORIDA POWER & LIGHTING COMPANY  
4840 BALLARD ROAD  
FORT MYERS, FL 33905-4300  
(239) 332-9137
  - CABLE:**  
COMCAST CABLE  
12641 CORPORATE LAKES DRIVE  
FORT MYERS, FL 33913  
(239) 432-9277
  - REFUSE:**  
WASTE PRO  
13110 RICKENBACKER PKWY.  
FORT MYERS, FL 33913  
(239) 337-0800
  - WASTEWATER:**  
CITY OF FORT MYERS UTILITIES  
2925 DR. MARTIN LUTHER KING BLVD.  
FORT MYERS, FL 33901  
(239) 321-8100
  - POTABLE WATER:**  
CITY OF FORT MYERS UTILITIES  
2925 DR. MARTIN LUTHER KING BLVD.  
FORT MYERS, FL 33901  
(239) 321-8100
  - TELEPHONE:**  
CENTURYLINK TELEPHONE  
8441 LITTLETON ROAD  
NORTH FT. MYERS, FL 33903  
(239) 336-2031

**PROJECT AREAS**

TOTALS	SITE S.F.	ACRES	%
BLDG.	53,218	1.22	100.0
PAVEMENT	4,000	0.09	7.0
IMPERVIOUS	17,882	0.41	34.0
PERVIOUS	21,882	0.50	41.0
	31,336	0.72	59.0

- VICINITY MAP**  
SCALE: 1" = 30'
- 
- INDEX OF SHEETS**
1. COVER SHEET
  2. GENERAL NOTES
  3. EXIST. CONDITIONS & EROSION CONTROL PLAN
  4. SITE DIMENSION PLAN
  5. GRADING, PAVING & DRAINAGE & PLAN
  6. UTILITY PLAN
  7. CROSS SECTIONS
  8. GRADING, PAVING & DRAINAGE DETAILS 1
  9. GRADING, PAVING & DRAINAGE DETAILS 2
  10. UTILITY DETAILS



**SITE DATA TABLE**

**SITE ADDRESS**  
3155 FOWLER STREET  
FORT MYERS, FL 33901

**SITE AREA:**  
53,218 S.F. (1.22 AC.)

**ZONING DESIGNATION:**  
(C.1) COMMERCIAL INTERCHANGE

**LAND USE DESIGNATION:**  
(C.1) COMMERCIAL INTERCHANGE

**DEVELOPMENT TYPE:**  
COMMERCIAL RETAIL

**BUILDING USE:**  
COMMERCIAL RETAIL

**CONSTRUCTION TYPE:**  
C.B.S

**STRAP NUMBER:**  
25-44-24-P2-00102.0140

**FEMA FLOOD ZONE:**  
"X"

**FLUCCS CODE**  
(1920) INACTIVE LANDS W/STREET PATTERN

**SOILS**  
36 (IMMOKALEE-URBAN LAND COMPLEX)

**PROPOSED BUILDING**

1 - COMMERCIAL BUILDING

COMMERCIAL BUILDING FLOOR AREA BREAKDOWN  
2,000 SF SHOWROOM (INTERIOR AREA)  
2,000 SF STORAGE (INTERIOR AREA)

**PARKING REQUIREMENTS**

COMMERCIAL RETAIL, SHOWROOM & STORAGE

1 SP. PER 200 SF BUILDING  
= 4000 SF / 200 = 20 SPACES REQUIRED  
SPACES PROVIDED = 20 SPACES INC. 1 H/C SPACE

**BUILDING SETBACKS**

REQD	PROVD	
NORTH:	10'	52.28'
WEST:	25'	67.00'
EAST:	10'	150.00'
SOUTH:	20'	82.74'

**LANDSCAPE BUFFERS**

REQD	PROVD	
NORTH:	5'	5'
WEST:	15'	15'
EAST:	15'	15'
SOUTH:	15'	15'